

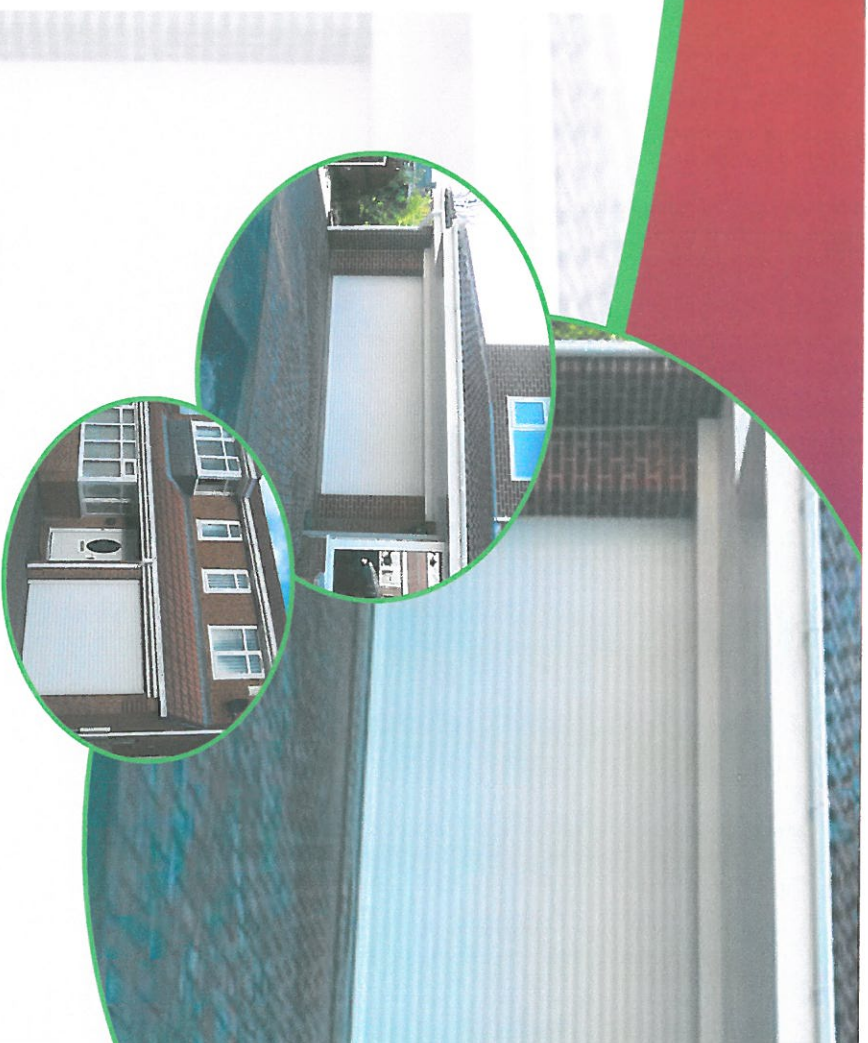
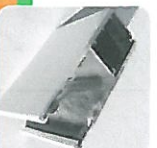
### Colours available.

|                   |                   |                        |                                       |
|-------------------|-------------------|------------------------|---------------------------------------|
| White<br>Ral 3016 | Cream<br>Ral 1015 | Fir Green<br>Ral 6009  | Red<br>Ral 3004                       |
| Brown<br>Ral 8019 | Black<br>Ral 9005 | Steel Blue<br>Ral 5011 | Colours for illustration purpose only |

### Textured wood grain finishes

|            |                   |
|------------|-------------------|
| Golden Oak | Walnut / Rosewood |
|------------|-------------------|

**AutoTHERM**



**Remote Controlled  
Insulated Roller Garage Doors**

**AutoTHERM**

Helping keep Britains homes warm



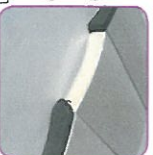


## Autotherm Construction

All Autotherm doors are constructed from interlocking 77mm twin walled aluminium slats and filled with CFC-free insulating foam, which combines strength whilst helping increase energy efficiency with a typical U value of 5.2 w/m<sup>2</sup> K.



The doors can easily span an opening up to 5400mm wide and come complete with a heavy duty weather seal to the bottom section.



## Security

Locking is actively engaged by the anti-lift geometry locking straps when the door is closed.



## Safety

All Autotherm doors are supplied with an infra-red photo electric safety beam as standard, which if the zone of the doors path detects an obstruction whilst closing, the door will automatically stop and return to the open position.



This system has benefits over other manufacturers standard bottom rail safety devices, as it detects the obstruction before the door actually touches it, thus preventing possible damage.

## Adaptability

Due to the design of the Autotherm door, it can be adapted to accommodate most types of garages, even those with arches.

## Finish

The door curtain is manufactured from corrosion-resistant aluminium and coated with an anti-abrasive polyester finish, which requires only an occasional wipe with a cloth and mild soapy water.

## Guide Rails

The guide rails are only available in a white or brown polyester powder coated finish and incorporate double neoprene and brush pile seals, which help prevent draughts, whilst increasing the insulation value of the door. (Please note that the colour of the guide rails may vary slightly from the door curtain).



## Side plates

Once fully retracted, the curtain is housed between two side plates, which locate into the guide rails via a cast aluminium leg. This helps distribute the weight of the door onto the guides, whilst simplifying the installation. The curtain is then assisted on its descent by two nylon rollers mounted onto the base of the side plates, which helps reduce wear and makes the door run smoother.



## Manual override

In the event of a power failure, a manual winding handle ensures that the door can be opened from inside the garage. An external manual winding system is also available as an optional extra if there is no other available access into the garage.

## Remote control operation

Each Autotherm door comes with remote control operation and 2 executive style compact handsets with key fobs. Rolling code technology ensures that security is paramount with a unique code generated each time the handset is activated. The remote control operation allows you to open and close the door from the convenience of your car – perfect for those wet and windy days! The control box has the option of a timed auto close facility and outputs for the connection of a separate 240 volt timed courtesy light and also for the connection for an internal push button or key switch.



## Headroom

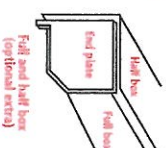
The tight roll of the door requires only 300mm of headroom for doors up to 3000mm in height. This allows additional roof space in your garage and maximises the drive through height for taller vehicles. Please note that approximately 70mm of the bottom of the door will be visible below the opening, when the door is in the open position.

## Side room

The Autotherm door can be installed either within the opening (reveal fix) if the side room is limited or behind the opening (face fix), allowing any old timber frames to be removed and maintaining the drive through width.

## Housing cover box (optional extra)

A front fascia section and back cover can be supplied as an optional extra, in either a white or brown finish. This helps increase the weather protection and insulation, whilst making the door even more aesthetically pleasing.



## Motors

At the time of manufacture, all Autotherm motors are designed to lift at least double the weight of the door that they are being fitted to. They also have 2 limit switches for both the open and close direction, so if one fails, the secondary one is there for back up, thus ensuring a long and trouble free life.

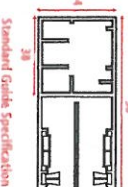
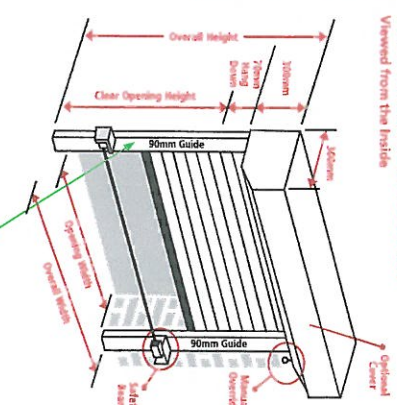
## Guarantees

All Autotherm doors come with a comprehensive return to base 12 months parts warranty.



## Measurement Guide

Viewed from the inside



## Installation Options

Face fix (fixing behind the opening)



Reveal fix (fixing between the opening)



Combination of Face Fix and Reveal Fix



Undersize fix (where some of the guide track will be into the opening)



Helping keep Britains homes warm

Due to constant development we reserve the right to change specification without prior notice.





# European Standards

EN 12453 - EN 12445



The EN12453 - EN12445 regulations establish safety and compliance requirements for automated doors and gates that, when in use, may come into contact with people.

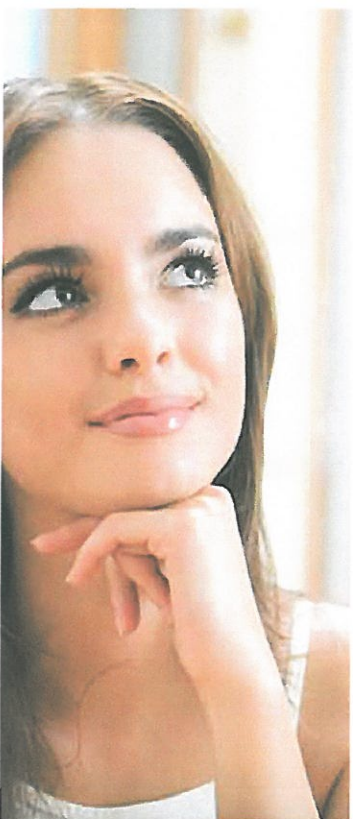
They define the minimum technical solutions making automated systems safer for users.

The key points are the installed automated system location, the type of command device used and the type of user.



## The INSTALLATION LOCATION may be:

- On private and bounded premises;
- On public premises bordering with public premises;
- On public premises.



## The USER may be:

### - Trained.

Trained users are those that are given instructions on how to activate the automation. They usually activate automations located on private premises.

### - Untrained.

Untrained users are those that are not given instructions on how to activate the automation. They usually activate systems located on public premises.

## The COMMAND may be:

### - non self-holding type (maintained action / man present function).

The automation is activated only thanks to automatic resetting buttons or switch selectors. An example of functioning: pressing a button you activate an automation. As soon as the button is released the automation stops working. The automation is visible from the user position.

### - Impulses sent by a fixed station device.

The impulses type command is activated by a fixed station, from which the system can be monitored. The button or switch selector do not need to be self holding type, which means they do not automatically reset.

### - a radio command impulse.

The automation is controlled by remote or fixed devices radio impulses. Each impulse sent has a corresponding function (i.e. open, close, stop etc.).

### - an automatic impulse.

Each impulse sent does not correspond only to a single function but to a complete working cycle (i.e. open and close cycle).





# Swing gates



## Underground OPERATOR

So low-profile you'll hardly know it's there. It provides more passage width room when space is an issue.

Series: Frog - Frog Plus - Super Frog



## External OPERATOR

Simple installation requiring no prep work. The most popular product when it comes to swing-gate operators.

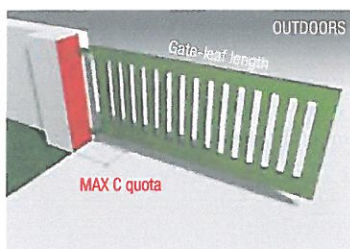
Series: Axo - Amico



## Operator with ARTICULATED ARM

When little room is available, instead of a traditional above-ground operator, one with an articulated arm solves the space issue.

Series: Stylo - Fast40 - Ferni



## MAXIMUM C QUOTA ON SWING GATES

Distance between the post edge and the centre axis on which the gate is fitted.

## The flashing light: for added safety

CAME recommends the installation of the flashing light to indicate the presence of moving mechanical parts.

Also, KIARON and KIARO24IN provide easy programming of reminders for periodic maintenance thanks to their "movement counter" function. With this, installers can decide on a number of cycles, and once the limit is reached, an additional light signal warns that scheduled maintenance is due.



# European Norms

An example of a European Regulation-compliant standard installation



**Installation:**  
**ON PUBLIC PREMISES**

The system is installed in a public area or bordering with a public area.  
Example: a private gateway that opens directly onto a main road.



**User Type:**  
**TRAINED**

The system is activated only by users trained to use the automation.



**Standard command type:**  
**RADIO COMMAND**

It allows the system control either by remote or fixed device impulses.



**Solutions for a safe installation:**  
**SAFETY SENSITIVE EDGES AND INFRARED-BEAM PHOTOCELLS**

Thanks to the special onboard mechanism, the sensitive safety edges are completely collapsible and have no rigid parts – to guarantee top level protection.



## EN TESTED: CAME's added value

When you use EN-TESTED operators and control panels you do not need to install any sensitive safety edges. However, the impact forces still need to be measured for compliance against the parameters established in the regulations.



This product is tested for compliance with maximum impact force standards established by EN 12445 and EN 12453 Technical Regulations.